

Hydraulic clamps for various die dimensions.

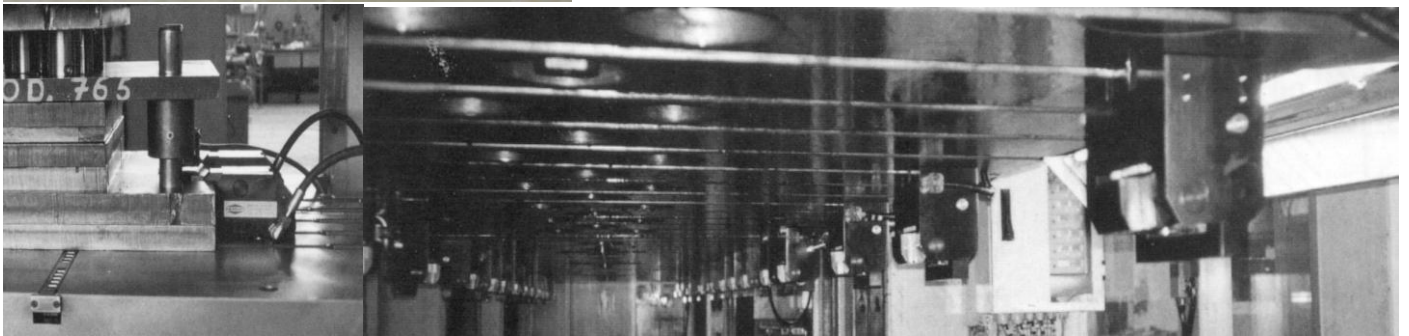


**Advantages:** Requires a very small die flange (clamping area) on the die.

SKH is also manufactured according to specific demands of the customer regarding flange measurements, T-slots in press etc.

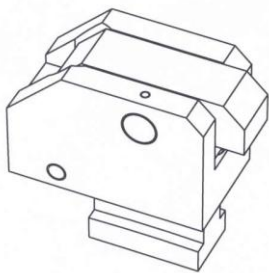
Tenon can be mounted according to choice (90 degrees interval) depending on the angle of the T-slot facing the flange/clamping area.

*Below: SKH mounted on press table and slide.*



TYPE	Clamping force at 200 bar	d	e	f	j	a	k	l	Stroke	a	b	c	h (min)	h (max)
8	8	58	65	30	20	17	80	25	4	18	30	12	30	36
20	20	63	80	40	20	17	116	35	6	18	30	12	30	36
40	40	78	97	60	20	21	140	40	6	22	37	16	38	45
70	70	98	110	75	25	21	155	50	8	22	37	16	38	45
100	100	98	110	75	25	27	205	50	8	28	46	20	48	56
*200D	200	196	110	75	25	35	205	50	8	36	56	25	61	71

Measure "g" is manufactured according to requirement of the customer.



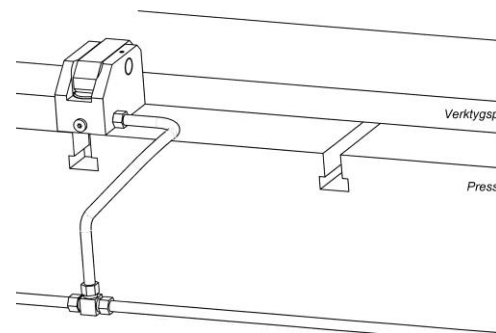
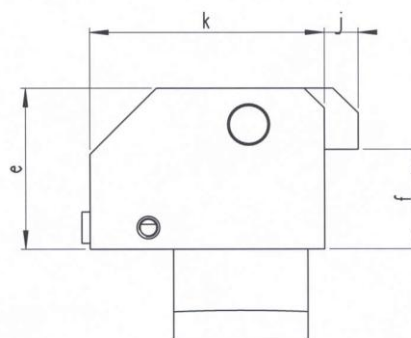
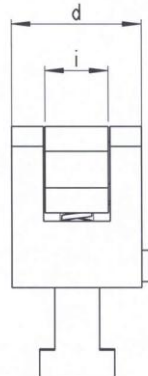
**Accessories as below:**

Holder SKH. For mounting on the outside of the press.

Extra heat proof seals (Viton) when mounting clamps on hot press tables.

**Note!**  
If an article is to be used at a existing or recently manufactured slot, always use the enclosed dimension print (page 4) when placing an order.

\*200D (Ask for prospect)



Example of positioning of SKH on a press